

FRU 4 BRAKE TESTER

worldwide[®]
environmental

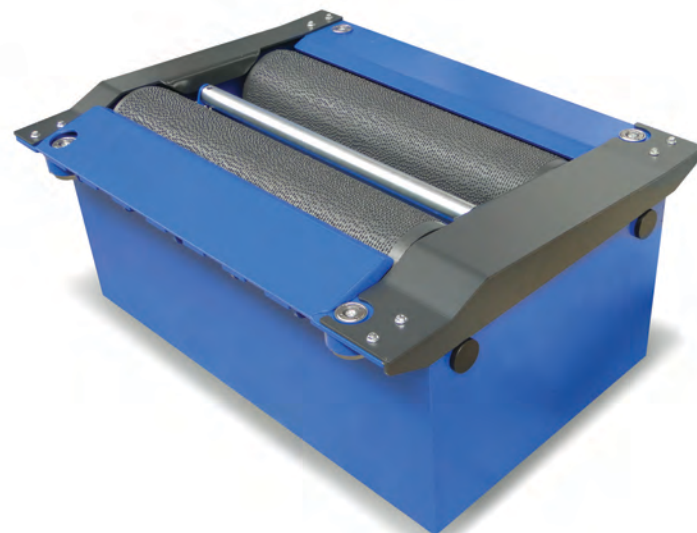
STANDARD EQUIPMENT

Brake Roller Bench Universal
Control Cabinet
Test Control through Remote Control
Graphical and Numerical Displays
Working Cycle Counter
Automatic Self-Check
Electric Blockage of Rollers
Elevated Rear Roller
Star-Delta Starting / Delayed Start
Automatic & Manual Start/Stop
Extensimetric Band System of Measurement
Rollers Covered Welded Steel or Synthetic Fiber
Software to test 4WD Vehicles
Communication: USB/RS232/Ethernet

The FRU 4 Brake Tester is used to make a reliable assessment of the state of the braking system of vehicles, including Heavy Duty vehicles. The system consists of two mechanically-welded steel frames, one for each wheel, on the front and rear axles. Its designed and produced for robustness, reliability and longevity.

Powerful motors drag the rollers while the strain cells report the measured braking force continuously during the test. New technical features, including larger memory and high-speed ethernet connection, make the FRU 4 ideal for heavy duty testing, intensive communications and data logging applications.

The FRU 4 Brake Tester is designed to adapt to any new requirements set by the latest revision of the ISO 21069 standard for brake testing on heavy vehicles. With an innovative design and advanced manufacturing techniques, it can also be equipped with both load simulation and the axle lift.



Max Axle Load 20 Tn.

Motor 2 x 11 kW

Max Track Width 3,100 mm

Min Track Width 850 mm



TECHNICAL DATA

Maximum Axle Load	20 Tn.
Drive Motors	2 x 11 kW (S2)
Test Speed	2.6 km/h
Maximum/Minimum Track Width	3,100 mm / 850 mm
Voltage	400 V 50Hz Threephasic
Protection Fuse	3 x 63 A
Thermal Protector	2 x 25 A
Roll Diameter	282 mm
Length of the Rollers	1,135 mm
Useful Length of the Rollers	1,050 mm
Distance Between Centers	485 mm
Lifting Height Rear Roller	50 mm
Friction Coefficient	0.9 Dry / 0.7 Wet
Measurement Ranges	0-8 kN / 0-40 kN
Measurement Gap	10 N
Measurement Indication Error	1%

DIMENSIONS

Bench Dimensions	1,470 x 1,150 x 680 mm
Packed Bench Dimensions	1,500 x 950 x 800 mm
Bench Weight	1,150 Kg
Packed Bench Weight	1,200 Kg

Cabinet Dimensions	680 x 570 x 1,350 mm
Packed Cabinet Dimensions	850 x 760 x 1,600 mm
Cabinet Weight	120 Kg
Packed Cabinet Weight	150 Kg

OPTIONAL EQUIPMENT



Voltage Stabilizer

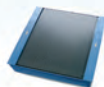


Rugged Tablet

Data Display Terminals



Wireless Pedal Dynamometer



Side Slip Aligner Kit

Civil Works Frame



Calibration Weight (6/10/30 kg)



Standard Lifting System (8 Cylinders)



Holder/Charger for Pressure Converters



Calibration Lever



Platform Roller Covers (2 Units)

Duplicate Cabinet



Weight Scale for Vehicle Axles



Hydraulic Load Simulator



Computer/Print Equipment