

# PLAY DETECTOR

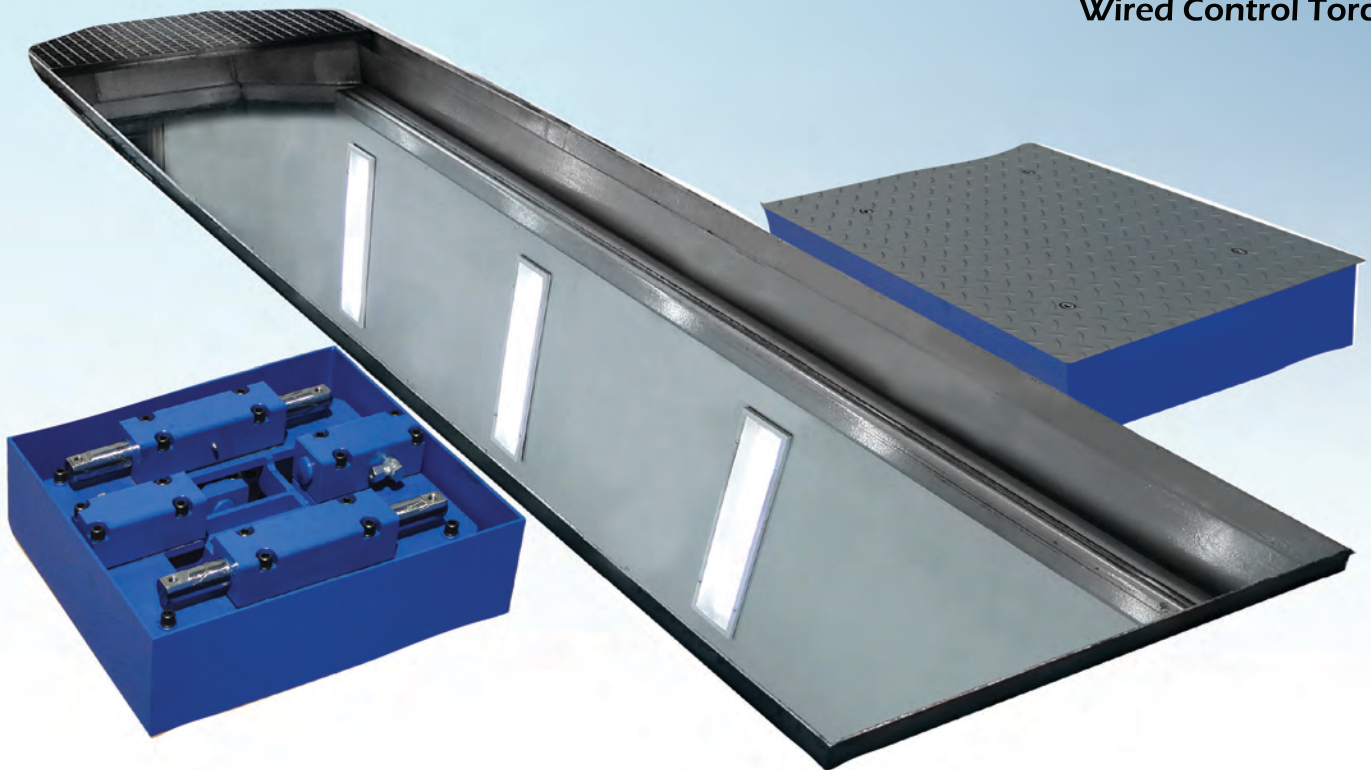
## STANDARD EQUIPMENT

Two (2) Electro Hydraulic Play Detectors with Four (4) Movements

Hydraulic Unit

Electrical Box

Wired Control Torch



**Operation** Electro Hydraulic

**Motor** 3 Cv

**Max Axle Load** 4 Tn

**Hydraulic Pump** 11.5 l/minute

The Electro Hydraulic Play Detector performs an efficient and effective verification of the axles of a vehicle and their components through the detection of wear and play on the vehicle axles.

Using the latest technologies, the Play Detector consists of two testing plates which are installed in parallel at the floor level. These plates are controlled by switches on the Hand Torch, with capabilities of forward, backward and sideways movements.

The Play Detector performs four independent movements per plate, all under the control of one single remote control or computer device, allowing independent movement of each plate and an effective and user-friendly vehicle test from beginning to end.

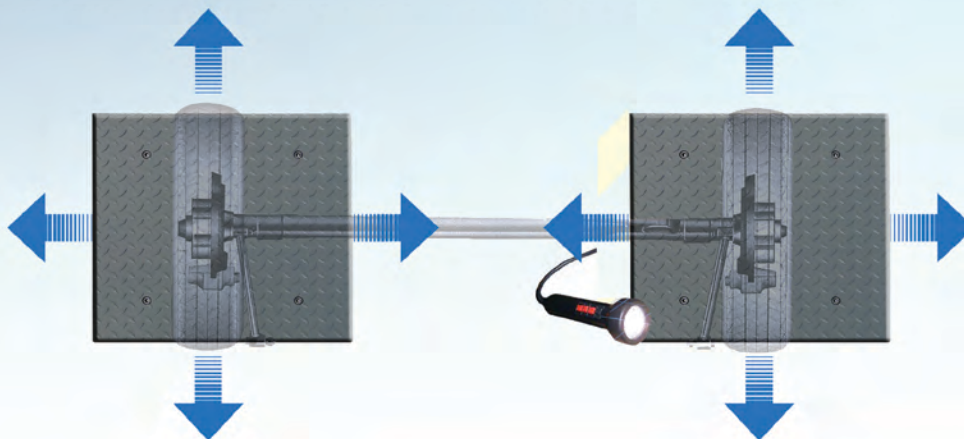
## TECHNICAL DATA

Maximum Axle Load	4 Tn.
Motors	3 CV
Voltage	400 V 50Hz Threephasic
Protection Fuse	3 A
Thermal Protector	10 A
LED Lamp	12 V / 6 W
Hydraulic Unit Tank Capacity	15 L Oil SAE-10
Hydraulic Pump	11.5 L/minute
Power Force	12,500 N
Maximum Side Movement	100 mm
Lamp Drive and Control Cable	

## DIMENSIONS

Plate Dimensions	650 x 650 x 160 mm
Packed Dimensions	1,150 x 845 x 930 mm
Plate Weight (Unit)	125 Kg
Packed Weight	295 Kg

## LONGITUDINAL AND TRANSVERSAL MOVEMENT OF BOTH PLATES



## OPTIONAL EQUIPMENT



**Hydraulic  
Group Desk**

**Power Supply  
230 V Threephasic**



**Wireless Control  
LED Flashlight  
Camera & Speaker**



**Wireless Control  
LED Flashlight**



**Rugged Tablet**

**Civil Works Frame**

**40m Hydraulic  
Hose Assemblies  
and Fittings**

**worldwide**  
environmental

wep-inc.com

**CORPORATE HEADQUARTERS**

1100 Beacon Street  
Brea, CA, USA, 92821

Telephone (International)  
Telephone (Toll Free)  
Email

+1.714.990.2700  
800.832.7664  
info@wep-inc.com